



PULADIN MAVAD PARNIAN



PULADIN MAVAD PARNIAN



About us:

Puladin Mavad Parnian(PMP) is one of the first Iranian A-Z stainless steel products manufactures, covering all the process from casting to post processes like machining. It has near 15 years of experience in producing the high-quality pipe fittings and valves.

PMP is basically specialized in investment casting and machining process, but has evolved into a leading producer of stainless steel products and continues to grow one day after another to become the leading company in the field.

We control all the creation processes, Responding to the specific needs of each market: From the initial concept and design of the product to the production and commercialization.

Customer service has always been at the core of our business. We strive to support our customers with flexibility, efficiency, and enthusiasm across all of our sales and delivery procedures.

PMP supplies to a wide range of customers across a diverse range of industries. These industries include food, dairy, hydraulic, pneumatic, chemical, petrochemical, water, marine, pump and many more.

With a broad portfolio of valves and fittings suitable for commercial and industrial environments as well as the water, power generation, dairy and marine sectors.

The full PMP range supplied includes:

- Stainless steel fittings
- Stainless steel valves
- Stainless steel steam traps
- Stainless steel strainers

Other materials are available on request. Products are from our own quality assured factories and our procedures conform to the latest standard of ISO 9001.

We are constantly adding to our range. If you could not find what you want among our products, please contact us.

Our differential values are advanced production techniques, domestic manufacturing, competitive prices, specialized customer service, and above all, environment.



پولادین مواد پرنیان اولین تولید کننده قطعات استنلس استیل به صورت صفر تا صد، از ریخته گری دقیق تا ماشینکاری است. این شرکت تجربه ایی بالغ بر ۱۵ سال در زمینه تولید انواع اتصالات فولادی و شیرآلات را دارا می باشد.

این شرکت به صورت تخصصی در زمینه ریخته گری دقیق و ماشینکاری فعال بوده که با تکمیل و توسعه محصولات استنلس استیل تصمیم به گسترش فعالیت های خود در این بازار گرفته است.

این مجموعه توانایی مهندسی معکوس را برای هر محصول، از ایده اولیه و طراحی تا تولید و تجاری سازی را برای مشتریان خود دارا می باشد.

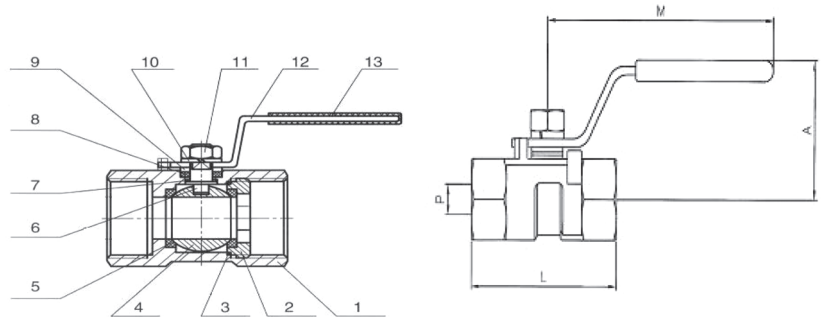
در پولادین مواد پرنیان ارائه خدمات مناسب به مشتریان هسته اصلی کسب و کار به شمار می رود و این شرکت تلاش می کند که پاسخگوی نیاز مشتریان در مهندسی قطعات، از ایده و طراحی اولیه تا تولید و تجاری سازی محصول باشد.

پولادین مواد پرنیان سابقه کاری طولانی در زمینه تولید انواع شیرآلات و همچنین اتصالات لازم جهت مصارف عمومی و صنعتی آب، تولید انرژی، صنعت لبنی و معدنی را دارا می باشد که در این راستا به گستره وسیعی از مشتریان خود در این صنایع خدمات ارائه می دهد. همچنین با توجه به امکان ارائه خدمات پرینت سه بعدی در این مجموعه امکان نمونه سازی و تولید با آلایزهای خاص و مطابق با الزامات کیفی ارائه شده توسط مشتری وجود خواهد داشت. ارزش های منحصر به فرد ما روش های تولید پیشرفته، تولید بومی، قیمت های رقابتی، خدمات مشتری منحصر به فرد و بالاتر از همه، اهمیت به محیط زیست است.

1 Pc Reduced Bore Ball Valve

Features

1. Monoblock ball valve.
2. Thread ends according ASME B1.20.1 NPT or Thread ends according to ISO 7-1 (EN 10226-1).
3. Reduced bore.
4. Made of stainless steel 1.4408 (CF8M).
5. Max. Working pressure 63 bar.
6. Working Temperature $-25\text{ }^{\circ}\text{C} + 180\text{ }^{\circ}\text{C}$.


GENERAL DIMENSIONS

Size	Dimensions (mm)			
	P	A	L	M
1/4"	4.6	32	39	60
3/8"	6.8	36	44	80
1/2"	9.2	42	56	87
3/4"	12.5	45	59	87
1"	15	50	69	105
1 1/4"	20	54	77	105
1 1/2"	25	70	81	125
2"	32	78	97	140

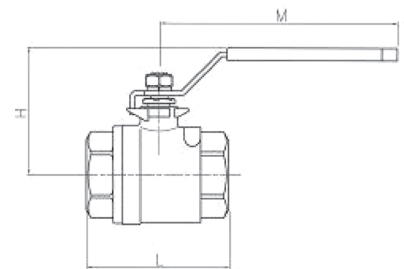
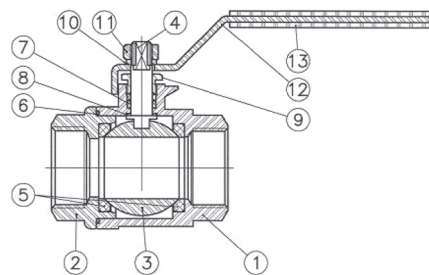
	Name	Material	Surface Treatment
1	Body	Stainless Steel 1.4408	Shot blasting
2	Cap	Stainless Steel 1.4408	Shot blasting
3	Gasket	PTFE	-----
4	Ball	Stainless Steel 1.4408	-----
5	Ball Seat	PTFE	-----
6	Stem	Stainless Steel AISI 316	-----
7	Friction ring	PTFE	-----
8	Stem packing	PTFE	-----
9	Stem ring	Stainless Steel AISI 304	-----
10	Washer	Stainless Steel AISI 304	-----
11	Nut	Stainless Steel AISI 304	-----
12	Handle	Stainless Steel AISI 304	-----
13	Handle Sleeve	PVC	-----

Stainless Steel Ball Valve, 2 Pieces



Features

1. Stainless steel reduce port ball valve, 2 pieces.
2. Thread ends according ASME B1.20.1 NPT or
Thread ends according to ISO 7-1 (EN 10226-1)
3. Made of stainless steel 1.4408 (CF8M).
4. Ball seats PTFE
5. Blow-out proof stem.
6. Device locking system.
7. Max. Working pressure 140 bar.



GENERAL DIMENSIONS

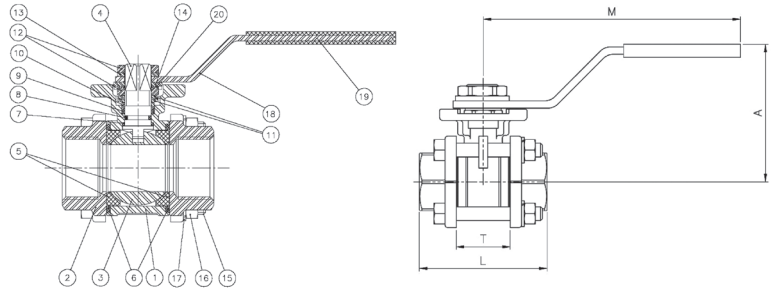
Size	Dimensions (mm)			
	P	H	L	M
1/4"	9.5	42	54	105
3/8"	9.5	42	54	105
1/2"	13	46	61.5	105
3/4"	17.5	53	71.7	147
1"	22	58	84.5	168
1 1/4"	25.4	68	92	193
1 1/2"	31.7	72	102.7	193
2"	38.1	78	118.2	193

	Name	Material	Surface Treatment
1	Body	Stainless steel 1.4408	Shot blasting
2	Cap	Stainless steel 1.4408	Shot blasting
3	Ball	Stainless steel 1.4408	-----
4	Stem	Stainless steel AISI 316	-----
5	Ball seat	PTFE	-----
6	Gasket	PTFE	-----
7	Trust Washer	PTFE	-----
8	Friction ring	PTFE	-----
9	Stem packing	Stainless steel AISI 304	-----
10	Washer	Stainless steel AISI 304	-----
11	Nut	Stainless steel AISI 304	-----
12	Handle	Stainless steel AISI 304	-----
13	Handle Sleeve	PVC	-----

Stainless Steel Full Port Ball Valve, 3 Pieces

Features

1. Stainless steel full port ball valve, 3 pieces.
2. Thread ends according ASME B1.20.1 NPT or
3. Thread ends according to ISO 7-1 (EN 10226-1)
4. Made of stainless steel 1.4408 (CF8M).
5. Ball seats PTFE (please ask for other materials)
6. O’ring in the stem FKM (Viton).
7. Stem gasket PTFE
8. Locking system.
9. Direct mounting actuator ISO 5211.
10. Blow-out proof stem.
11. Max. Working pressure 63 bar.
12. Working Temperature –25 °C + 180 °C.


GENERAL DIMENSIONS

Size	Dimensions (mm)						
	P	K	S	A	L	M	ISO5211
1/4"	11	10	14.1	60	47.6	112	F03
3/8"	12.7	10	17.6	60	47.6	112	F03
1/2"	15	10	21.7	60	55	112	F03/F04
3/4"	20	14	27.1	70	73	138	F04/F05
1"	25	14	33.8	70	81	138	F04/F05
1 ¼"	32	15	42.6	88	91	160	F05/F07
1 ½"	40	15	48.7	94	103	205	F05/F07
2"	50	19	61.1	100	120	205	F05/F07
2 ½"	65	21	73.8	150	155	330	F07/F10
3"	80	24	89.8	165	182	330	F07/F10
4"	100	35	115.5	175	229	340	F07/F10

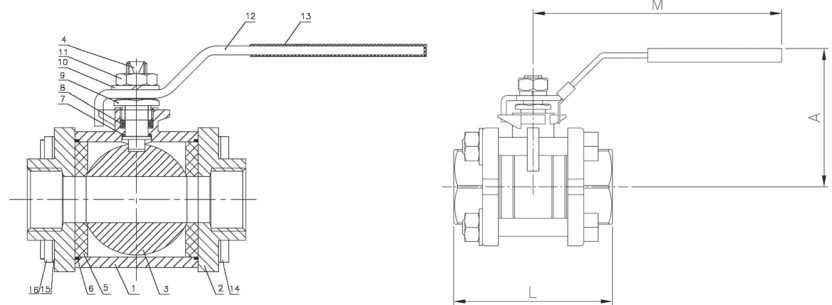
	Name	Material	Surface Treatment
1	Body	Stainless Steel 1.4408	Shot blasting
2	Cap	Stainless Steel 1.4408	Shot blasting
3	Ball	Stainless Steel 1.4408	Polishing
4	Stem	Stainless Steel AISI 316	----
5	Ball Seat	PTFE	----
6	Gasket	PTFE	----
7	Thrust Washer	PTFE	----
8	O’ring	FKM (Viton)	----
9	Stem packing	PTFE	----
10	Gland	Stainless Steel AISI 304	----
11	Belleville Washer	Stainless Steel	----
12	Nut	Stainless Steel AISI 304	----
13	Washer	Stainless Steel AISI 304	----
14	Stopper	Stainless Steel AISI 304	----
15	Bolt	Stainless Steel AISI 304	----
16	Nut	Stainless Steel AISI 304	----
17	Grover washer	Stainless Steel AISI 304	----
18	Handle	Stainless Steel AISI 304	----
19	Handle Sleeve	PVC	----
20	Lock Washer	Stainless Steel AISI 304	----

Carbon Steel WCB Full Port Ball Valve, 3 Pieces



Features

1. Full port ball valve, 3 pieces.
2. Thread ends according ASME B1.20.1 NPT
or
Thread ends according to ISO 7-1 (EN 10226-1)
3. Made of Carbon Steel WCB.
4. Ball seats PTFE
5. Stem gasket and Body seal made of PTFE.
6. Locking system.
7. Blow-out proof stem.
8. Max.. Working pressure 1000 WOG.
9. Working Temperature -25 °C + 180 °C.

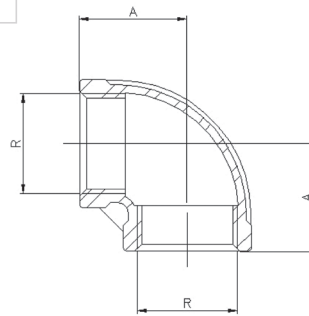


GENERAL DIMENSIONS

Size	Dimensions (mm)			
	Bore	A	L	M
1/4"	11.6	48	50	100
3/8"	11.6	48	50	100
1/2"	15	50	61	103
3/4"	20	60	70	127
1"	25	64	80	127
1 1/4"	32	79	93	154
1 1/2"	40	85	102	154
2"	50	87	124	192
2 1/2"	65	117	156	244
3"	80	125	179	244
4"	100	173	218	330

	Name	Material	Surface Treatment
1	Body	Carbon Steel	Phosphatized
2	Cap	Carbon Steel	Phosphatized
3	Ball	Stainless Steel AISI 316	-----
4	Stem	Stainless Steel AISI 316	-----
5	Seat ball	PTFE	-----
6	Gasket	PTFE	-----
7	Thrust Washer	PTFE	-----
8	Stem packing	PTFE	-----
9	Gland	Stainless Steel AISI 304	-----
10	Sprin Washer	Stainless Steel AISI 304	-----
11	Nut	Stainless Steel AISI 304	-----
12	Handle	Stainless Steel AISI 304	-----
13	Handle sleeve	PVC	-----
14	Bolt	Stainless Steel AISI 304	-----
15	Spring Washer	Stainless Steel AISI 304	-----
16	Nut	Stainless Steel AISI 304	-----

Stainless Steel Fittings: Elbow 90° F-F

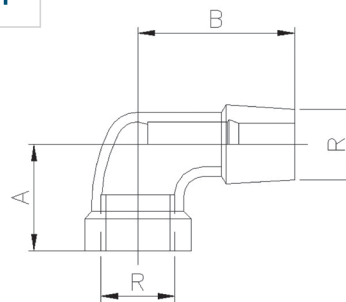


Features

1. Made of AISI 316 (Investment Casting).
2. Thread according to ISO 7-1 (EN 10226-1) Std. or Thread according to ANSI B 2.1 NPT Std.
3. Dimensions according to ISO 4144 Std.
4. Max. working pressure 20 Bar (S-150).
5. Temperature ratings -20 °C to 220 °C.

Size(R)	Dimensions (mm)
	A
1/4"	19
3/8"	23
1/2"	27
3/4"	32
1"	38
1 1/4"	45
1 1/2"	48
2"	57
2 1/2"	69
3"	78
4"	96

Stainless Steel Fittings: Elbow 90° M-F

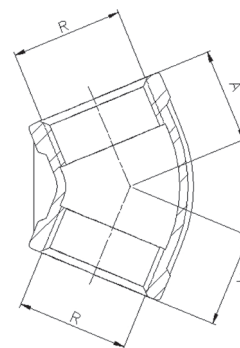


Features

1. Made of AISI 316 (Investment Casting).
2. Thread according to ISO 7-1 (EN 10226-1) Std or Thread according to ANSI B 2.1 NPT Std..
3. Dimensions according to ISO 4144 Std.
4. Max. Working pressure 20 Bar (S-150).
5. Temperature ratings -20 °C to 220 °C.

Size(R)	Dimensions (mm)	
	A	B
1/4"	19	27
3/8"	23	29
1/2"	27	35
3/4"	32	40
1"	38	46
1 1/4"	45	54
1 1/2"	48	57
2"	57	70
2 1/2"	69	83
3"	78	94
4"	96	115

Stainless Steel Fittings: Elbow 45° F-F.

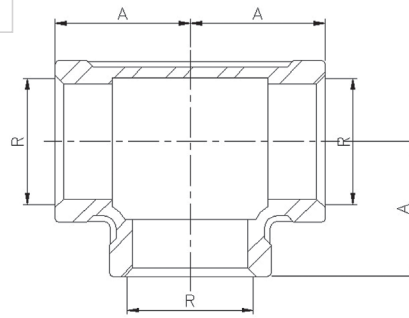


Features

1. Made of AISI 316 (Investment Casting).
2. Thread according to ISO 7-1 (EN 10226-1) Std. or Thread according to ANSI B 2.1 NPT Std.
3. Dimensions according to ISO 4144 Std.
4. Max. Working pressure 20 Bar (S-150).
5. Temperature ratings -20 °C to 220 °C.

Size(R)	Dimensions (mm)
	A
1/4"	17
3/8"	19
1/2"	21
3/4"	25
1"	29
1 1/4"	33
1 1/2"	37
2"	42
2 1/2"	49

Stainless steel fittings: Tee F

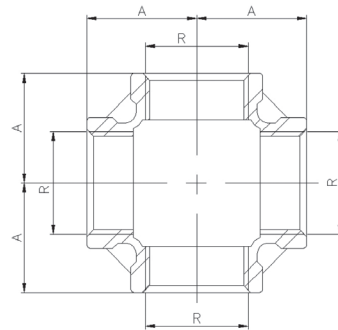


Features

- Made of AISI 316 (Investment Casting).
- Thread according to ISO 7-1 (EN 10226-1) Std. or Thread according to ANSI B 2.1 NPT Std.
- Dimensions according to ISO 4144 Std.
- Max. Working pressure 20 Bar (S-150).
- Temperature ratings -20 °C to 220 °C.

Size(R)	Dimensions (mm)
	A
1/4"	19
3/8"	23
1/2"	27
3/4"	32
1"	38
1 1/4"	45
1 1/2"	48
2"	57
2 1/2"	69
3"	78
4"	96

Stainless steel fittings: Cross F-F

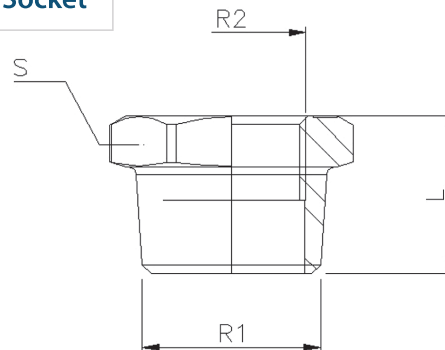


Features

- Made of AISI 316 (Investment Casting).
- Thread according to ISO 7-1 (10226-1) Std. or Thread according to ANSI B 2.1 NPT Std.
- Dimensions according to ISO 4144 Std.
- Max. Working pressure 20 Bar (S-150).
- Temperature ratings -20 °C to 220 °C.

Size(R)	Dimensions (mm)
	A
1/4"	19
3/8"	23
1/2"	27
3/4"	32
1"	38
1 1/4"	45
1 1/2"	48
2"	57

Stainless steel fittings: Reducing Socket

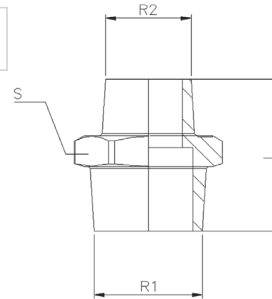


Features

- Made of AISI 316 (Investment Casting).
- Thread according to ISO 7-1 (EN 10226-1) Std. or Thread according to ANSI B 2.1 NPT Std.
- Dimensions according to ISO 4144 Std.
- Max. Working pressure 20 Bar (S-150).
- Temperature ratings -20 °C to 220 °C.

Size (R1xR2)	Dimensions (mm)	
	L	S
1/4" x 1/8"	14,5	15
3/8" x 1/4"	16	18
1/2" x 1/4"	19,5	23
1/2" x 3/8"	19,5	23
3/4" x 3/8"	21	28
3/4" x 1/2"	21	28
1" x 1/2"	24	35
1" x 3/4"	24	35
1 1/4" x 3/4"	27	44
1 1/4" x 1"	27	44
1 1/2" x 1"	27	50
1 1/2" x 1 1/4"	27	50
2" x 1"	32	62
2" x 1 1/4"	32	62
2" x 1 1/2"	32	62
2 1/2" x 2"	34	77
3" x 2 1/2"	37,5	90

Stainless steel fittings: Reducing Hex Nipple

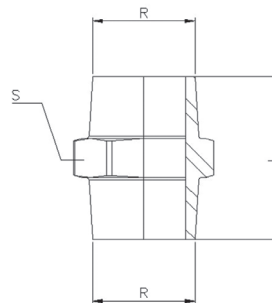


Features

- Made of AISI 316 (Investment Casting).
- Thread according to ISO 7-1 (EN 10226-1) Std. or Thread according to ANSI B 2.1 NPT Std.
- Dimensions according to ISO 4144 Std.
- Max. Working pressure 20 Bar (S-150).
- Temperature ratings -20 °C to 220 °C.

Size (R1xR2)	Dimensions (mm)	
	L	S
1/4" x 1/8"	22,5	15
3/8" x 1/4"	26,5	18
1/2" x 1/4"	30	23
1/2" x 3/8"	30,5	23
3/4" x 1/2"	35,5	28
1" x 1/2"	38,5	35
1" x 3/4"	39,5	35
1 1/4" x 3/4"	42,5	44
1 1/4" x 1"	45	44
1 1/2" x 1"	45	50
1 1/2" x 1 1/4"	47,5	50
2" x 1 1/4"	52,5	62
2" x 1 1/2"	52,5	62

Stainless steel fittings: Hex Nipple

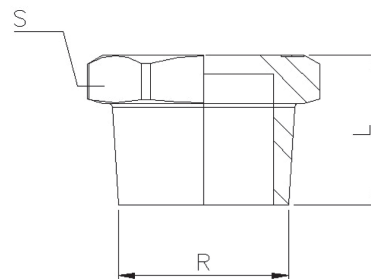


Features

- Made of AISI 316 (Investment Casting).
- Thread according to ISO 7-1 (EN 10226-1) Std. or Thread according to ANSI B 2.1 NPT Std.
- Dimensions according to ISO 4144 Std.
- Max. Working pressure 20 Bar (S-150).
- Temperature ratings -20 °C to 220 °C.

Size(R)	Dimensions (mm)	
	L	S
1/4"	25	15
3/8"	27	18
1/2"	34	23
3/4"	36,5	28
1"	42	35
1 1/4"	47,5	44
1 1/2"	47,5	50
2"	57	62
2 1/2"	61	77
3"	67,5	90

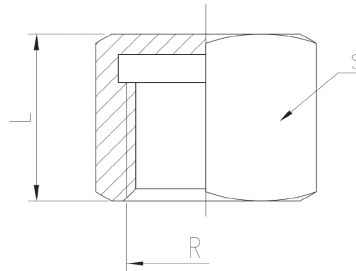
Stainless steel fittings: Hex Plug



Features

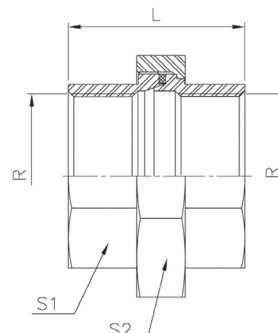
- Made of AISI 316 (Investment Casting).
- Thread according to ISO 7-1 (EN 10226-1) Std. or Thread according to ANSI B 2.1 NPT Std.
- Dimensions according to ISO 4144 Std.
- Max. Working pressure 20 Bar (S-150).
- Temperature ratings -20 °C to 220 °C.

Size(R)	Dimensions (mm)	
	L	S
1/4"	14,5	15
3/8"	16	18
1/2"	19,5	23
3/4"	21	28
1"	24	35
1 1/4"	27	44
1 1/2"	27	50
2"	32	62
2 1/2"	34	77
3"	37,5	90

Stainless steel fittings: Cap

Features

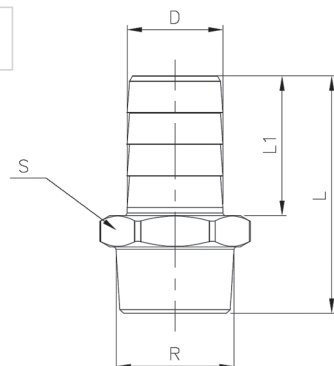
- Made of AISI 316 (Investment Casting).
- Thread according to ISO 7-1 (EN 10226-1) Std.
or
Thread according to ANSI B 2.1 NPT Std.
- Dimensions according to ISO 4144 Std.
- Max. Working pressure 20 Bar (S-150).
- Temperature ratings -20 °C to 220 °C.

Size(R)	Dimensions (mm)	
	L	S
1/4"	14	18
3/8"	14.5	20
1/2"	18.5	25
3/4"	19.5	30
1"	22.5	38
1 1/4"	25.5	47
1 1/2"	25.5	53
2"	30	66
2 1/2"	35	82
3"	38.5	96
4"	45	122

Stainless steel fittings: Union 3 pieces F-F

Features

- Made of AISI 316 (Investment Casting).
- Threads according to ISO 7-1 (EN 10226-1) Std.
or
Thread according to ANSI B 2.1 NPT Std.
- Dimensions according to ISO 4144 Std.
- Sealing with PTFE gasket.
- Max. Working pressure 20 bar (S-150).

Size(R)	Dimensions (mm)		
	L	S1	S2
1/4"	33,5	17	29
3/8"	36,5	20	34
1/2"	39,5	25	39
3/4"	42,5	30	47
1"	50	38	58
1 1/4"	54	47	67
1 1/2"	58	53	76
2"	65	66	90
2 1/2"	75	82	109
3"	83	96	123

Stainless steel fittings: Hose Nipple

Features

- Made of AISI 316 (Investment Casting).
- Threads according to ISO 7-1 (EN 10226-1) Std.
or
Thread according to ANSI B 2.1 NPT Std.
- Dimensions according to ISO 4144 Std.
- Max. Working pressure 20 Bar (S-150).
- Temperature ratings -20 °C to 220 °C.

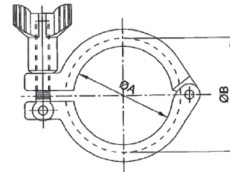
Size (R)	Dimensions (mm)			
	L	L1	D	S
1/4"	42,5	28	9	15
3/8"	49	33	11,5	18
1/2"	57,5	38	15	22
3/4"	66	45	20	28
1"	76	52	27	35
1 1/4"	79	52	33	44
1 1/2"	83	56	39,5	50
2"	92	60	52	62
2 1/2"	99	65	67	78
3"	107,5	70	80	91

Fast closing Clamp bracket lock



Features

1. Made of Stainless steel AISI 304.
2. Sanitary polish $Ra \leq 1.6 \mu m$.
3. Made according to Clamp (BS 4825-3 Standard).
4. Max. Working pressure 10 bar.



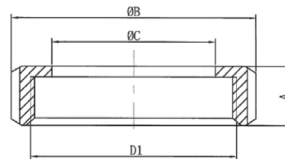
Size	Dimensions (mm)	
	A	B
1/2"-3/4"	20	28
1" - 1 1/2"	44.4	53.6
2"	57.8	67
2 1/2"	71.4	80.6
3"	84	94.2
4"	110	122.2

Nut for Union DIN 11851 (Sanitary Line)



Features

1. Made by Stainless steel 1.4308 (AISI 304).
2. Thread according to Std. DIN 405.
3. External surface finished $Ra \leq 3.2 \mu m$.
4. Max. Working pressure 10 bar.



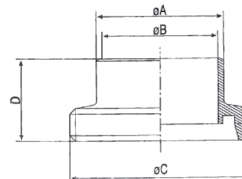
Size(R)	DN	Dimensions (mm)				
		A	B	C	D1	Grooves
1/2"	15	18	44	25	RD34 x 1/8"	4
3/4"	20	20	54	31	RD44 x 1/6"	4
1"	25	21	63	36	RD52 x 1/6"	4
1 1/4"	32	21	70	42	RD58 x 1/6"	4
1 1/2"	40	21	78	49	RD65 x 1/6"	4
2"	50	22	92	62	RD78 x 1/6"	4
2 1/2"	65	25	112	80	RD95 x 1/6"	6
3"	80	29	127	94	RD110 x 1/4"	6
4"	100	31	148	115	RD130 x 1/4"	6

Male Connection for weld DIN 11851 (Sanitary Line)



Features

1. Made by stainless steel 1.4308 (AISI 304).
2. Thread according to Std. DIN 405.
3. Internal Surfaces which come into contact with fluids $Ra \leq 1.6 \mu m$.
4. External surface finished $Ra \leq 3.2 \mu m$.
5. External diameter connection for weld is over-dimension.
6. Max. Working pressure 10 bar.



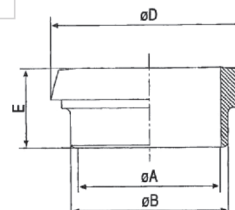
Size	DN	Dimensions (mm)			
		A	B	C	D
1/2"	15	21	16	RD34 x 1/8"	21
3/4"	20	25	20	RD44 x 1/6"	24
1"	25	31	26	RD52 x 1/6"	29
1 1/4"	32	37	32	RD58 x 1/6"	32
1 1/2"	40	43	38	RD65 x 1/6"	33
2"	50	55	50	RD78 x 1/6"	35
2 1/2"	65	72	66	RD95 x 1/6"	40
3"	80	87	81	RD110 x 1/4"	45
4"	100	106	100	RD130 x 1/4"	54

Welding Liner DIN 11851 (Sanitary Line)



Features

1. Made by stainless steel 1.4308 (AISI 304).
2. Internal Surfaces which come into contact with fluids $Ra \leq 1.6 \mu m$.
3. External surface finished $Ra \leq 3.2 \mu m$.
4. External diameter connection for weld is over-dimension.
5. Max. Working pressure 10 bar.



Size	DN	Dimensions (mm)			
		A	B	D	E
1/2"	15	16	21	28.5	17
3/4"	20	20	25	36.5	18
1"	25	26	31	44	22
1 1/4"	32	32	37	50	25
1 1/2"	40	38	43	56	26
2"	50	50	55	68.5	28
2 1/2"	65	66	72	86	32
3"	80	81	87	100	37
4"	100	100	106	121	44

Office

Unit 710, No 54, Erfan Business Complex,
17th alley, Bakhshayesh Street, West Sarv
Street, Sa'adat Abad, Tehran, Iran.

Tel/Fax: +98(21)22362983

Factory

Tel/Fax: +98(83)34733547

دفتر مرکزی

سعادت آباد، سرو غربی، خیابان بخشایش
کوچه هفدهم، ساختمان اداری تجاری عرفان
پلاک ۵۴، طبقه هفتم، واحد ۷۱
تلفکس: ۰۲۱-۲۲۳۶۲۹۸۳

کارخانه

تلفکس: ۰۸۳-۳۴۷۳۳۵۴۷

www.pmpfitting.com